

Catalogue

Clay Jallies
(Dry Powder Pressed)

**Stay Creative
Stay Sustainable
with Terracotta**



The Jaali or Ventilator brick - the term used for perforated or latticed screen became a preferred material for external facades and internal partitions, ceiling decorations. A Jaali wall saves time, materials and also increases the speed of construction. When there is no absolute necessity of solid walls, jaali wall gives added advantages. Jallies are made out of pure clay and are available in Extrusion with rustic finish and Powder Press with smooth finish. Jaalies comes with huge collections that can mix and match to create unique designs.

Features

- Eco Friendly
- Higher Compressive Strength
- Lower Water Absorption

Benefits

- Passive Fire Protection
- Thermal Insulation
- Cryogenic Insulation
- Long Life & Cost Saving

Advantages

- Acoustic Insulation
- Hot Surface Insulation
- Combination Solution
- Extra Protection & Natural Beauty



Model No - CJP01
Model Name - Opel
Dimension - 8" x 8"
Weight: 2.6 KG
Qty per Sft: 2.25 Nos



Model No - CJP02
Model Name - Petal
Dimension - 8" x 8"
Weight: 2.6 KG
Qty per Sft: 2.25 Nos



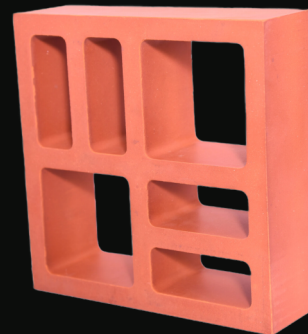
Model No - CJP03
Model Name - Camp
Dimension - 8" x 8"
Weight: 2.6 KG
Qty per Sft: 2.25 Nos



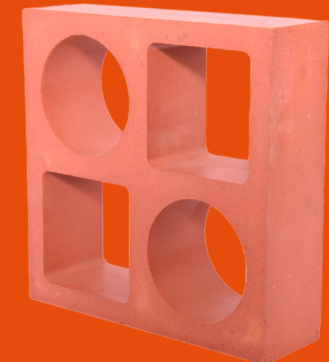
Model No - CJP04
Model Name - Amber
Dimension - 8" x 8"
Weight: 2.6 KG
Qty per Sft: 2.25 Nos



Model No - CJP05
Model Name - TV
Dimension - 8" x 8"
Weight: 2.6 KG
Qty per Sft: 2.25 Nos



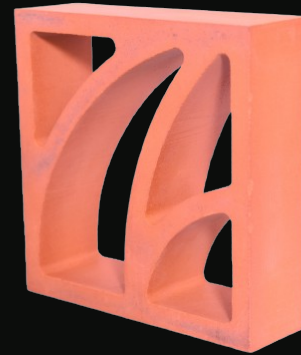
Model No - CJP06
Model Name - Cubic
Dimension - 8" x 8"
Weight: 2.6 KG
Qty per Sft: 2.25 Nos



Model No - CJP07
Model Name - Circle
Dimension - 8" x 8"
Weight: 2.6 KG
Qty per Sft: 2.25 Nos



Model No - CJP08
Model Name - Lotus
Dimension - 8" x 8"
Weight: 2.6 KG
Qty per Sft: 2.25 Nos



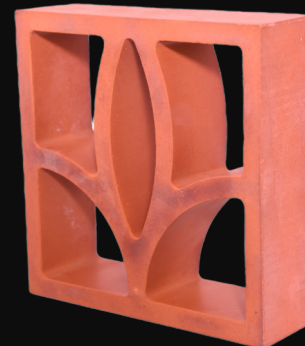
Model No - CJP09
Model Name - Eden
Dimension - 12" x 8"
Weight: 4.0 KG
Qty per Sft: 1.5 Nos



Model No - CJP10
Model Name - Diamond
Dimension - 8" x 8"
Weight: 2.0 KG
Qty per Sft: 2.25 Nos



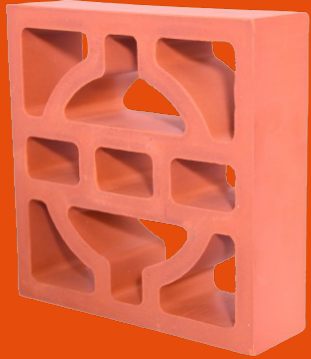
Model No - CJP11
Model Name - Lilly
Dimension - 8" x 8"
Weight: 2.6 KG
Qty per Sft: 2.25 Nos



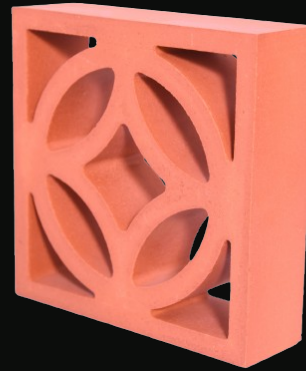
Model No - CJP12
Model Name - Zebra
Dimension - 8" x 8"
Weight: 2.6 KG
Qty per Sft: 2.25 Nos



Model No - CJP13
Model Name - Pearl
Dimension - 8" x 8"
Weight: 2.6 KG
Qty per Sft: 2.25 Nos



Model No - CJP14
Model Name - Topaz
Dimension - 8" x 8"
Weight: 2.6 KG
Qty per Sft: 2.25 Nos



Model No - CJP15
Model Name - Swas
Dimension - 8" x 8"
Weight: 2.6 KG
Qty per Sft: 2.25 Nos



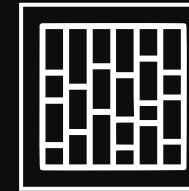
Model No - CJP16
Model Name - Arrow
Dimension - 8" x 8"
Weight: 2.6 KG
Qty per Sft: 2.25 Nos



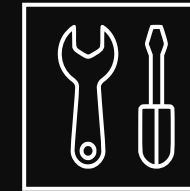
**Natural
Sunlight**



**Natural
Ventilation**



**Easy
Installation**



**Low
Maintenance**



**Cost &
Time Saving**



**Fire
Resistance**



**Termite
Free**



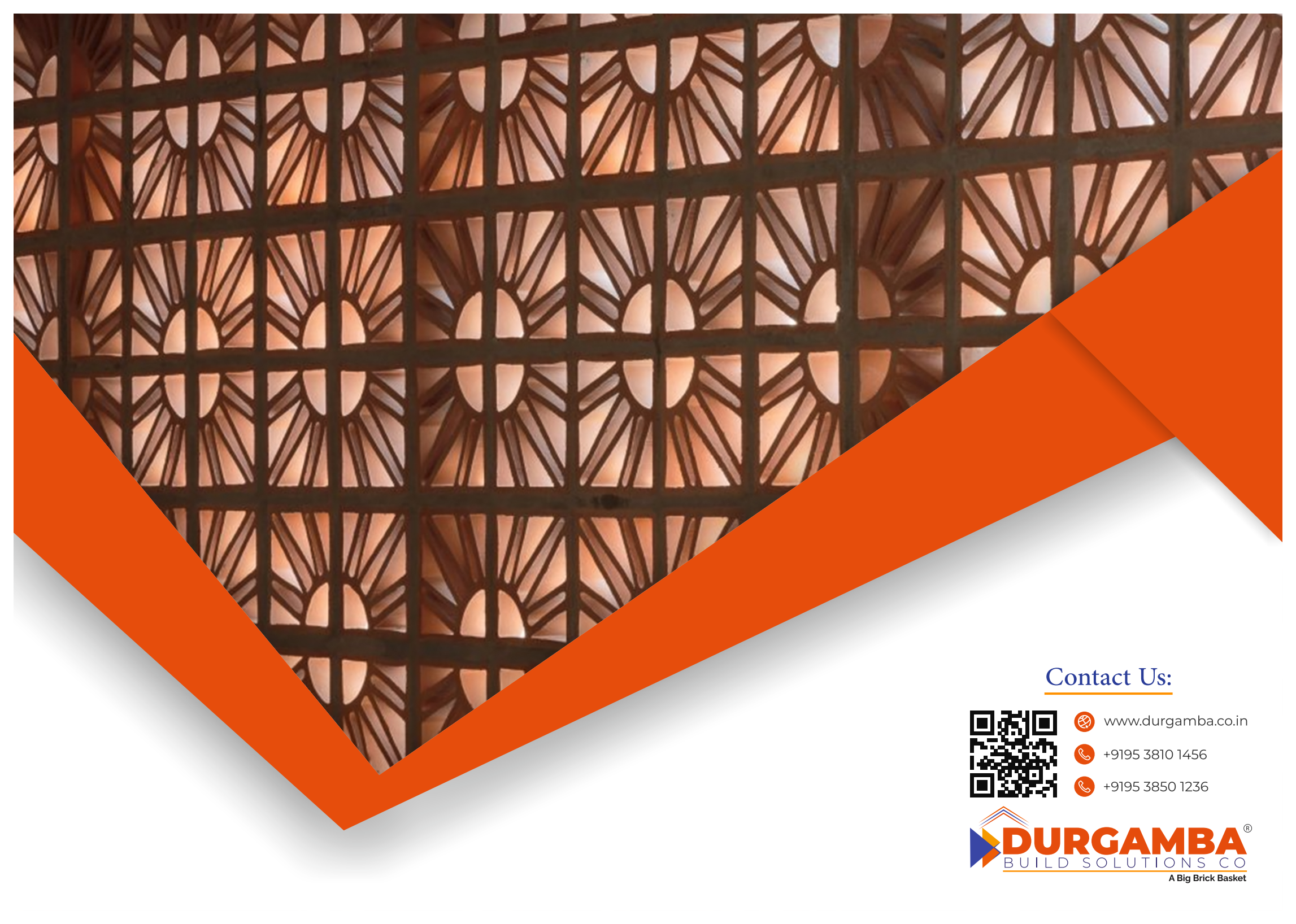
**100%
Asbestos Free**



**Design
Flexibility**




**All Weather
Resistance**



Contact Us:



 www.durgamba.co.in

 +9195 3810 1456

 +9195 3850 1236

