

Catalogue

Solid Facing Bricks
(Extruded)

Stay Creative
Stay Sustainable
with Terracotta



Solid Facing Clay Bricks, also known as Exposed Wire-cut Bricks are manufactured in extrusion relatively low moisture bricks for completely exposed purposes and solid by nature having very high compressive strength. Exposed Extruded Wirecut Bricks are used where high strength, low water absorption and no plastering are needed. These are purely natural with very high quality, user and maintenance friendly eco brick, durable of its life cycle and provides natural and aesthetic look, with better thermal insulation. These are available in Flemish & RAT Trap Bonding.

Features

- Eco Friendly
- Higher Compressive Strength
- Lower Water Absorption

Benefits

- Passive Fire Protection
- Cryogenic Insulation
- Long Life & Cost Saving

Advantages

- Acoustic Insulation
- Hot Surface Insulation
- Combination Solution Saving
- Extra Protection & Natural Beauty

Technical Information

* **Compressive Strength** - $\pm 20\text{N/m}^2$. As per IS:3495(Part-1, 2) – 2019

* **Water Absorption** - $< \pm 14.5\%$ by weight as per IS:1077-1992



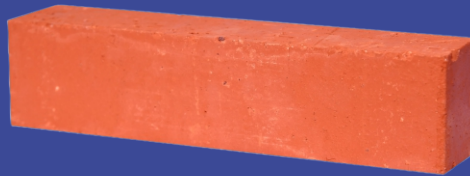
Model No - SF 01
Model Name - Solid 12x3 Facing
Dimension - 12" x 6" x 3"
Weight: 6.8 KG
Qty per Sft: 4 Nos



Model No - SF 02
Model Name - Solid 12x3 Facing
Dimension - 12" x 4" x 3"
Weight: 4.10 KG
Qty per Sft: 4 Nos



Model No - SF 03
Model Name - Solid 12x3 Facing
Dimension - 12" x 3" x 2"
Weight: 2.10 KG
Qty per Sft: 4 Nos



Model No - SF 04
Model Name - Solid 9x3 Facing
Dimension - 9" x 4" x 3"
Weight: 3.20 KG
Qty per Sft: 5.33 Nos



Model No - SF 05
Model Name - Solid 9x2 Facing
Dimension - 9" x 4" x 2"
Weight: 2.20 KG
Qty per Sft: 6 Nos



Model No - SF 06
Model Name - Solid 9x1 Facing
Dimension - 9" x 4" x 1"
Weight: 1.20 KG
Qty per Sft: 12 Nos



Model No - SF 07
Model Name - Solid 9x2 Facing
Dimension - 9" x 3" x 2"
Weight: 1.60 KG
Qty per Sft: 6 Nos



Model No - SF 08
Model Name - Solid 9x1 Facing
Dimension - 9" x 3" x 1"
Weight: 0.80 KG
Qty per Sft: 12 Nos



Model No - SF 09
Model Name - Solid 9x1.25 Facing
Dimension - 9" x 1.25" x 1.25"
Weight: 0.70 KG
Qty per Sft: 8 Nos



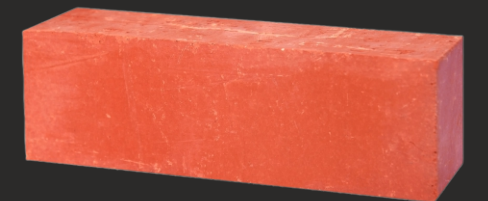
Model No - SF 10
Model Name - RAT 12x2 Facing
Dimension - 12" x 2" x 3"
Weight: 2.10 KG
Qty per Sft: 6 Nos



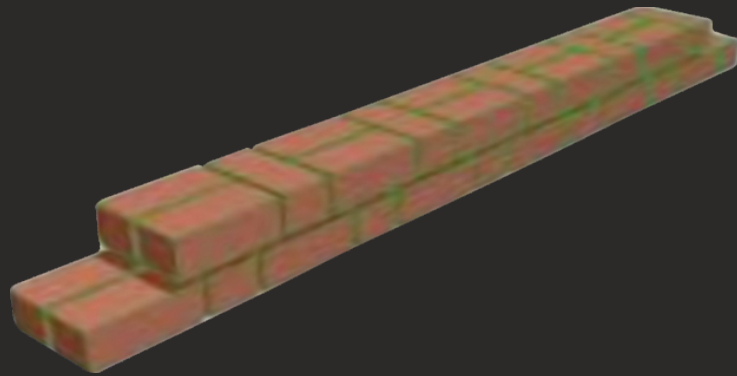
Model No - SF 11
Model Name - RAT 9x4 Facing
Dimension - 9" x 3" x 4"
Weight: 3.30 KG
Qty per Sft: 4 Nos



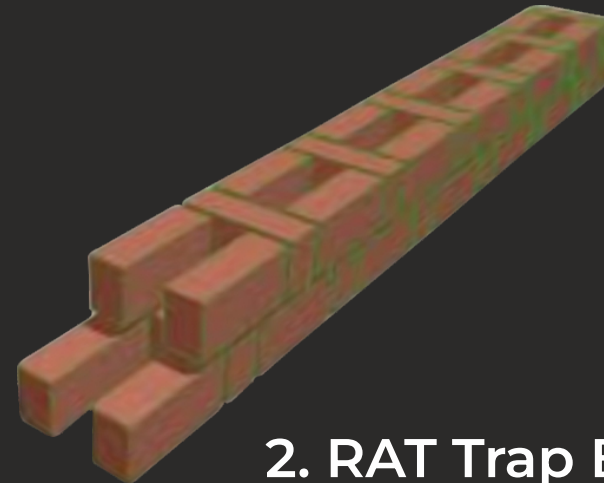
Model No - SF 12
Model Name - RAT 9x3 Facing
Dimension - 9" x 2" x 3"
Weight: 1.50 KG
Qty per Sft: 5.33 Nos



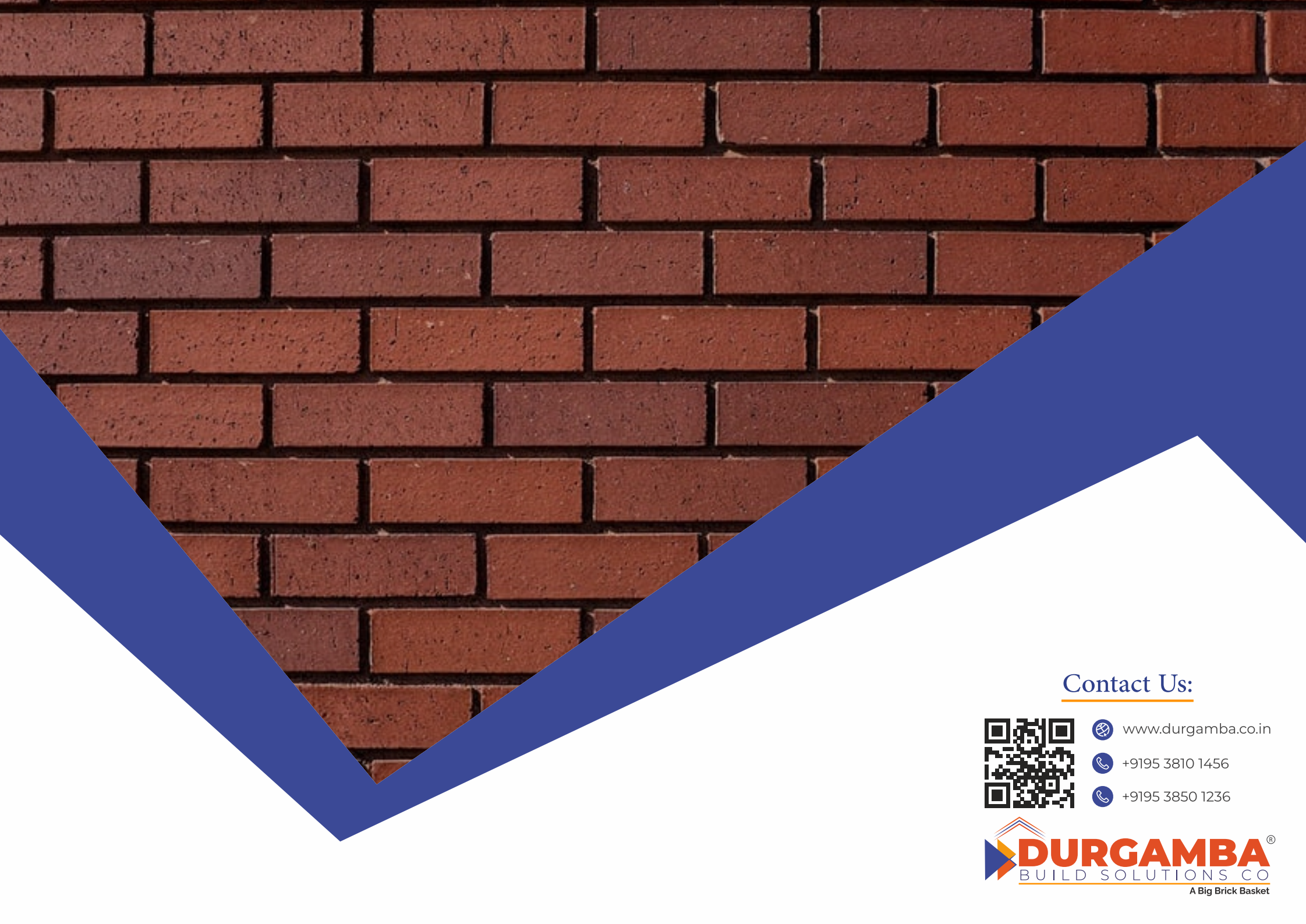
Types of Bonding



1. Flemish Bonding




2. RAT Trap Bonding



Contact Us:



 www.durgamba.co.in

 +9195 3810 1456

 +9195 3850 1236

